

Lung Analysis Resection Synapse 3D

Lung Analysis Resection extracts lung regions, pulmonary artery, pulmonary vein, bronchus and other regions for a 3D visualization of the lungs.

Lung resection simulation can be performed by extracting and segmented the territories of pulmonary vessels and bronchi, useful for preoperative planning.

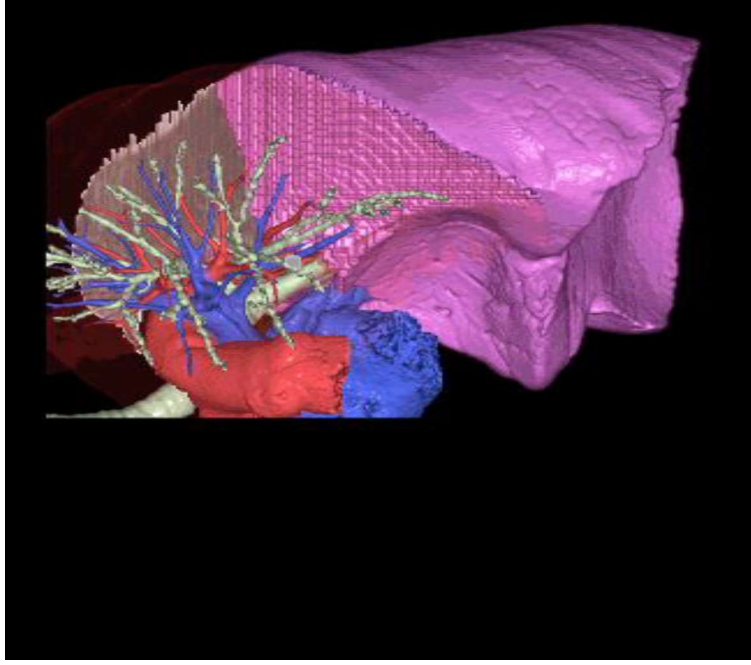
Lung Analysis Resection

Thoracic surgery

Pre-Operative Simulation

Video Assisted Thoracic Surgery

Robotic surgery



Use as much as you want !

Process, simulate and share, with no limits

Fujifilm unique technology

Automatic Extractions: Lobes, Pulmonary Arteries, Veins, Bronchus

Territory area resections

Cut plane display

Calculate your margins

Developed with surgeons, for surgeons...

Lung Analysis Resection

Benefits

- On site solution
- Identify anatomical variations
- Plan your lobar and sub lobar resections
- Reduce you surgery time
- Increase Patient Safety

